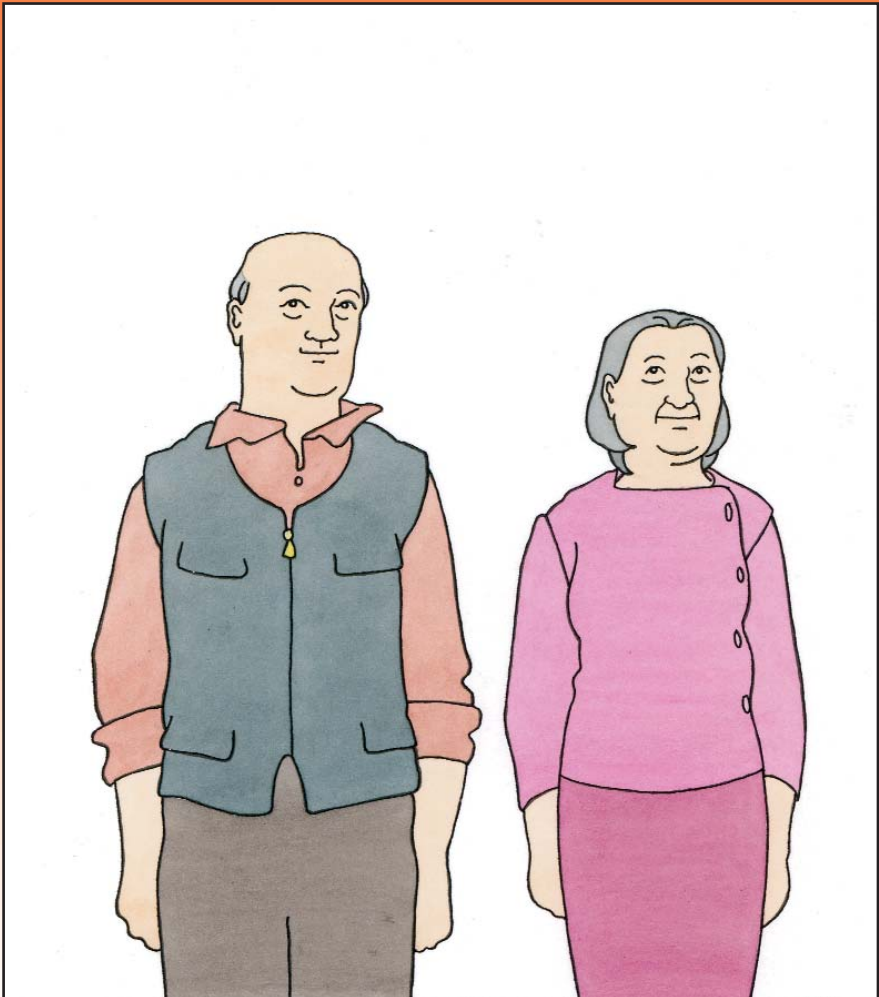
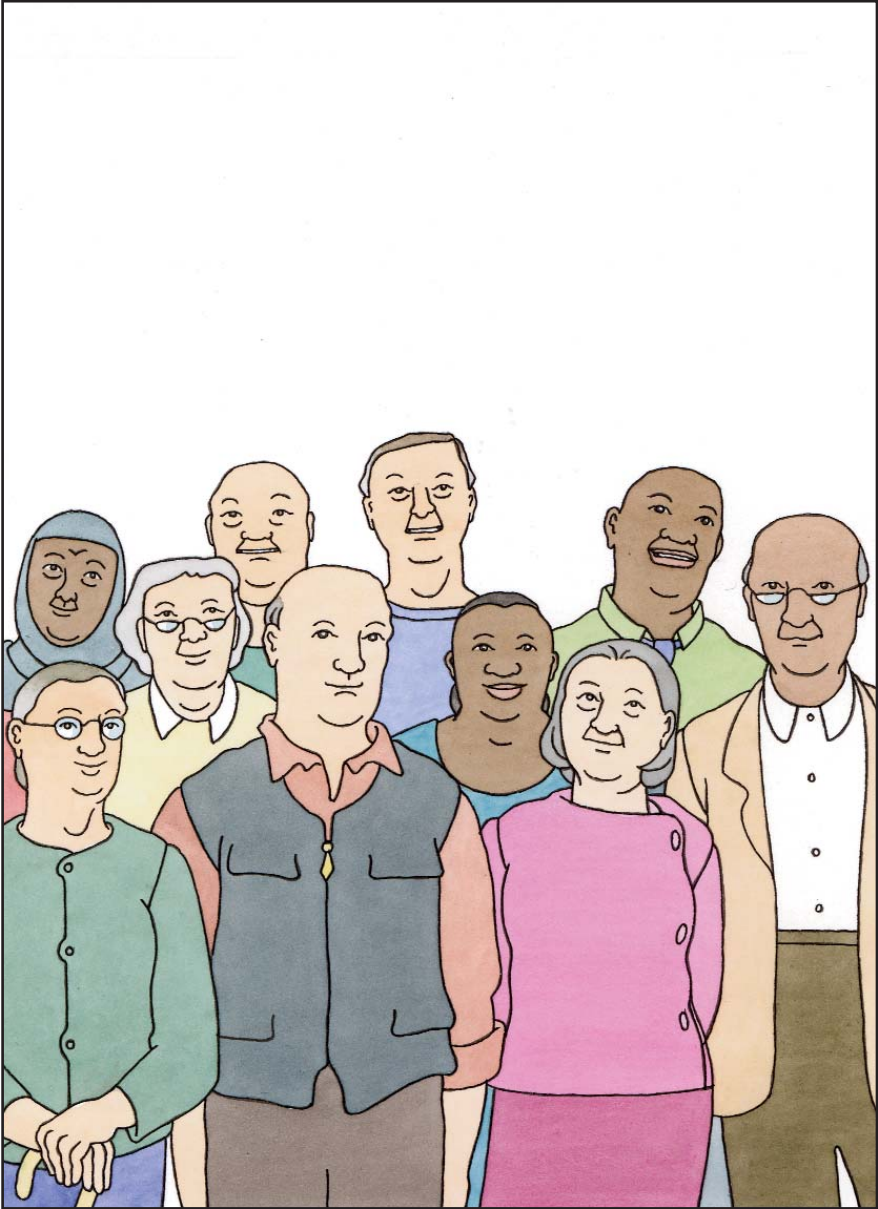
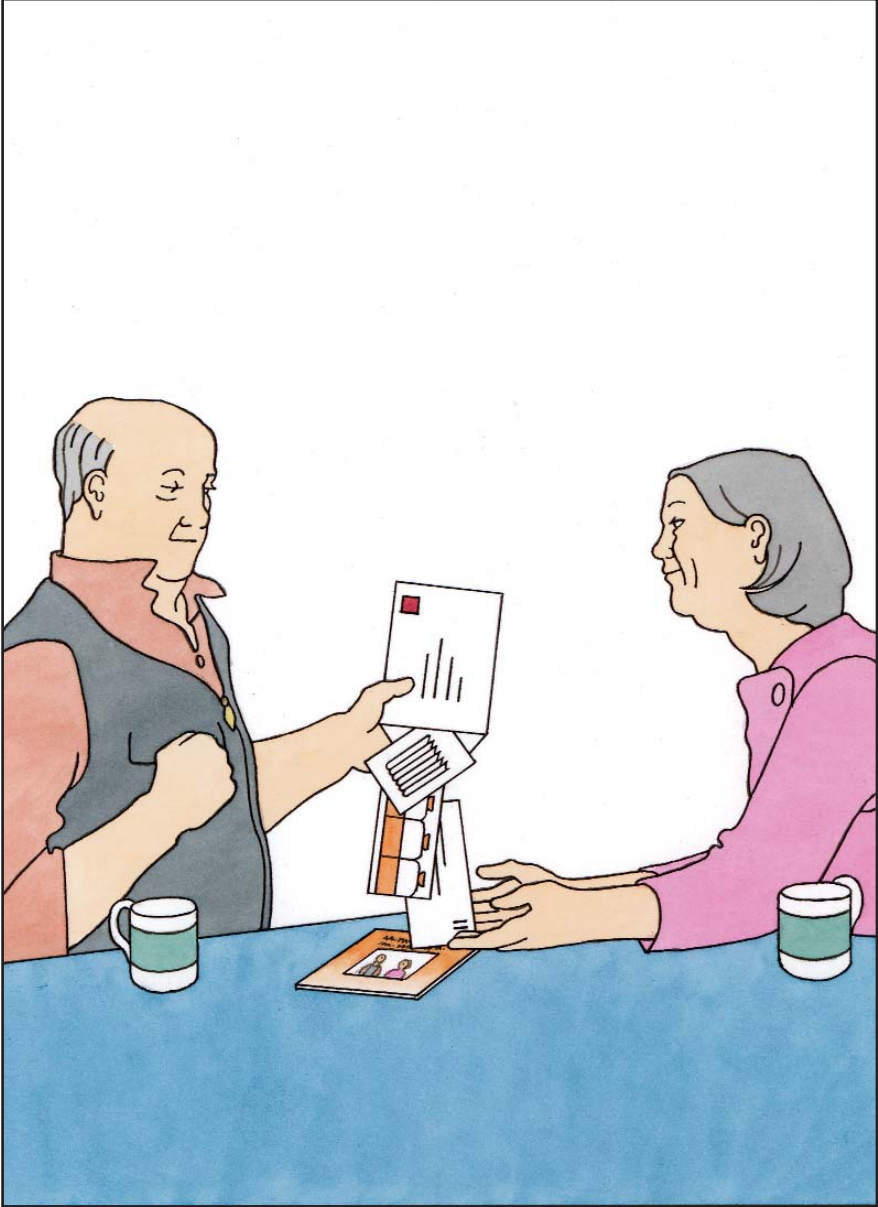


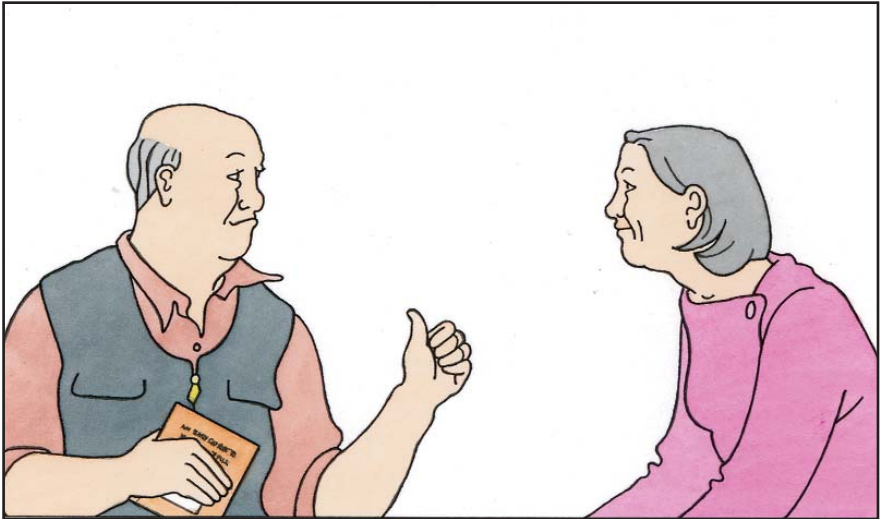
An Easy Guide to Bowel Cancer Screening



A leaflet by and for men and women with learning disabilities

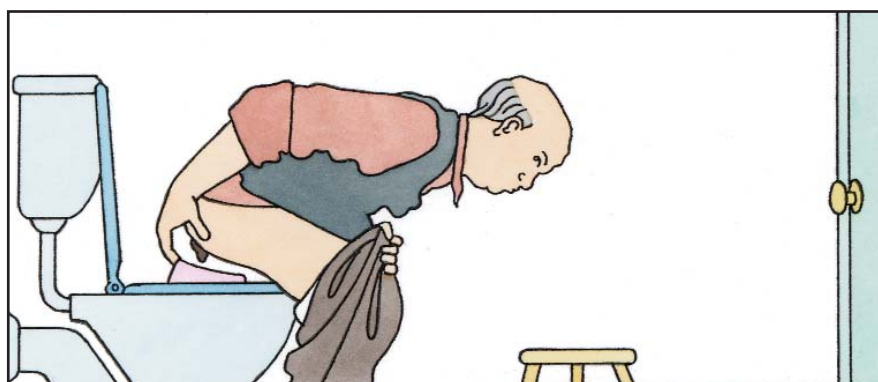
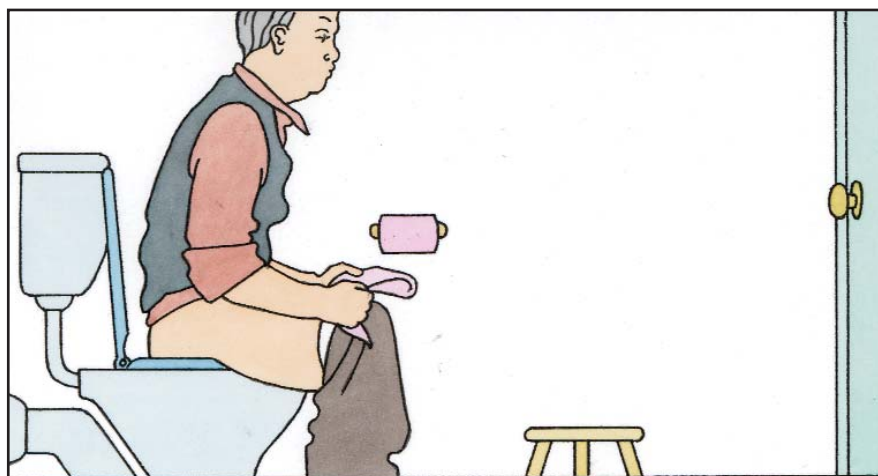


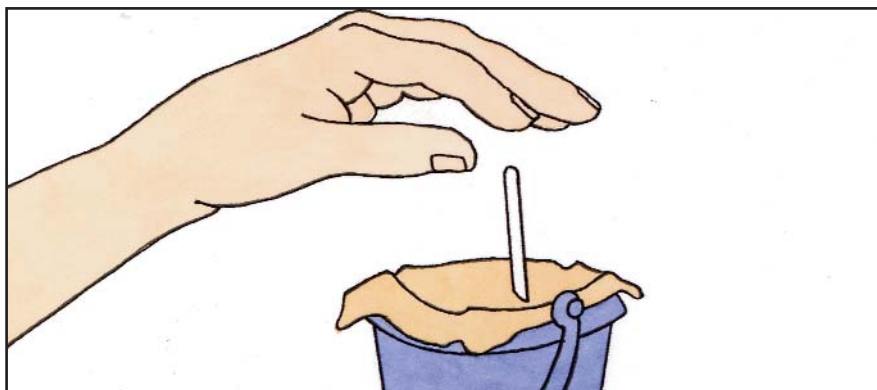
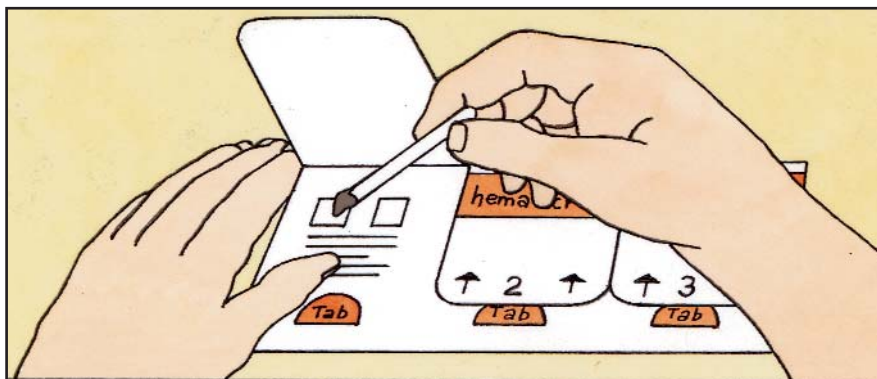


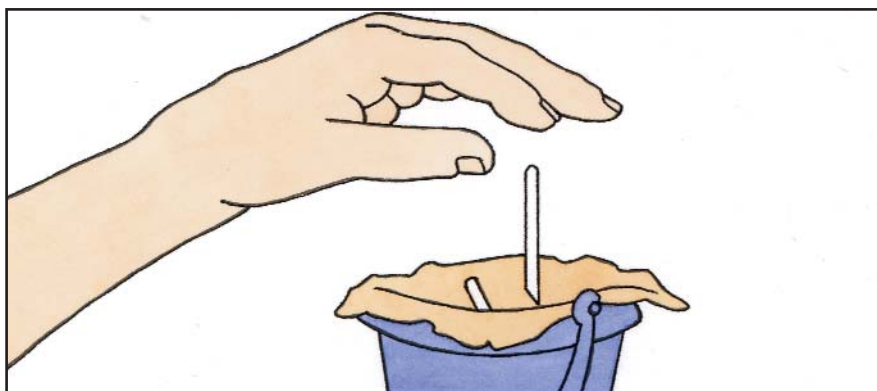
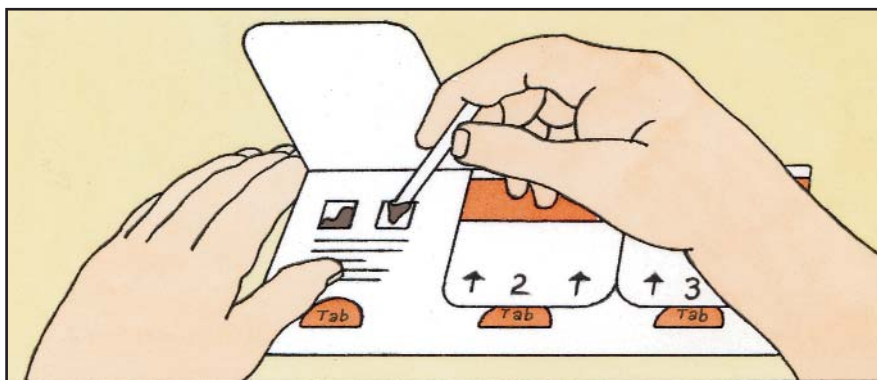




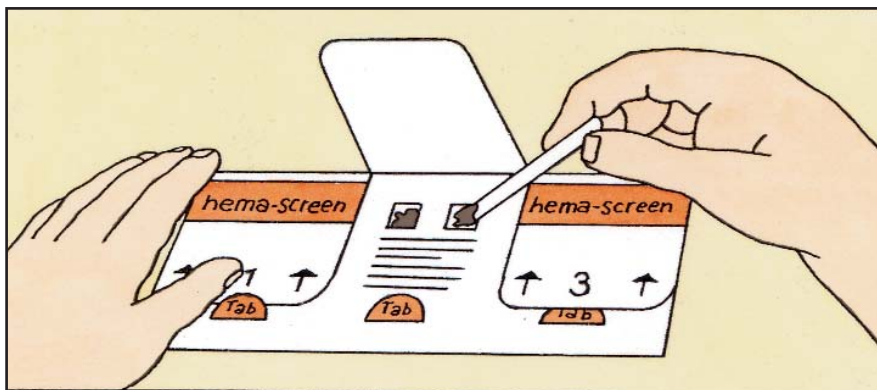
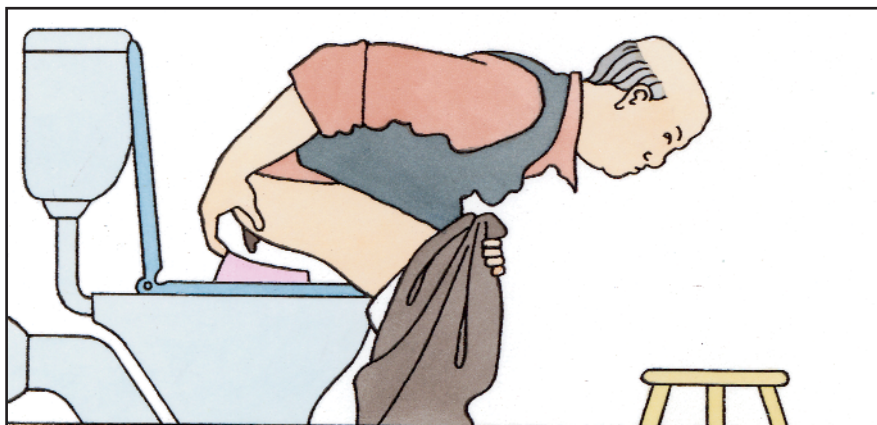


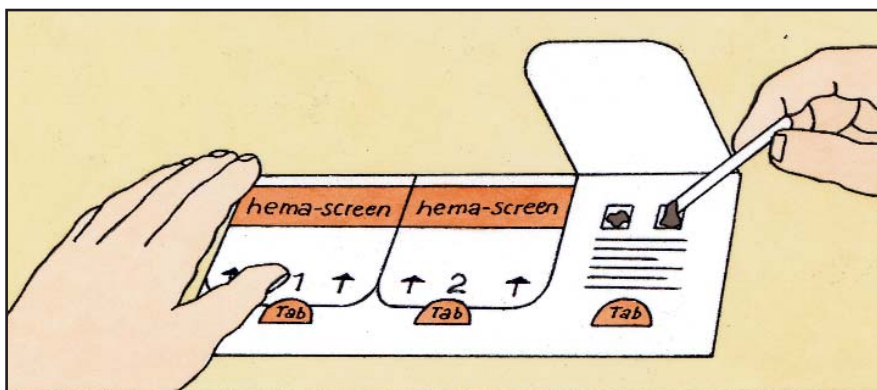
















An Easy Guide to Bowel Cancer Screening

Cancer of the bowel is more common in older people. If you find it early it can be treated. There is a test for bowel cancer. The testing kit comes in the post. You can decide if you want to do the test

Take the testing kit into the toilet. You are going to test your poo. Make sure there is a bin near the toilet. Open the first flap on the testing kit. Take two sticks and put them by the kit. Catch your poo on the toilet paper. Put it down somewhere safe. With one stick, take a bit of the poo. Put it on the first square on the kit. Throw the stick in the bin. Use another stick to take a different bit of poo. Put it on the other square.

Now close the flap. Tuck it under the tab. Write today's date on the flap. Make sure you wash your hands. Keep the kit until next time you do a poo.

On another day, you have to do everything again! This time open the second flap. Put two bits of poo on the squares. Close the flap. And again on another day! This time open the third flap. Put two bits of poo on the squares and close the flap. Now everything is finished. Put the test kit in the special envelope and post it. You will get a letter to tell you the results.

If everything is OK with the test, you don't need to do it again. Some people will be asked to go for a different test.

You can ask for someone to tell you more about bowel cancer screening.

Or call our Bowel Cancer Screening
Helpline free on
0800 707 60 60

The pictures and words in this leaflet have been chosen with the help of men and women with learning disabilities.

More copies of the leaflet can be ordered via the DH Publications Orderline, Email: dh@prolog.uk.com,
Phone: 0300 123 1002

This leaflet can be downloaded from the NHS Cancer Screening Programme website at: www.cancerscreening.nhs.uk

If you are supporting someone with learning disabilities to read this leaflet, please first read the pictures and text yourself. Then let the person tell you what they understand is happening in each picture. This will highlight anything they do not understand

Pictures © Catherine Brighton & Sheila Hollins.