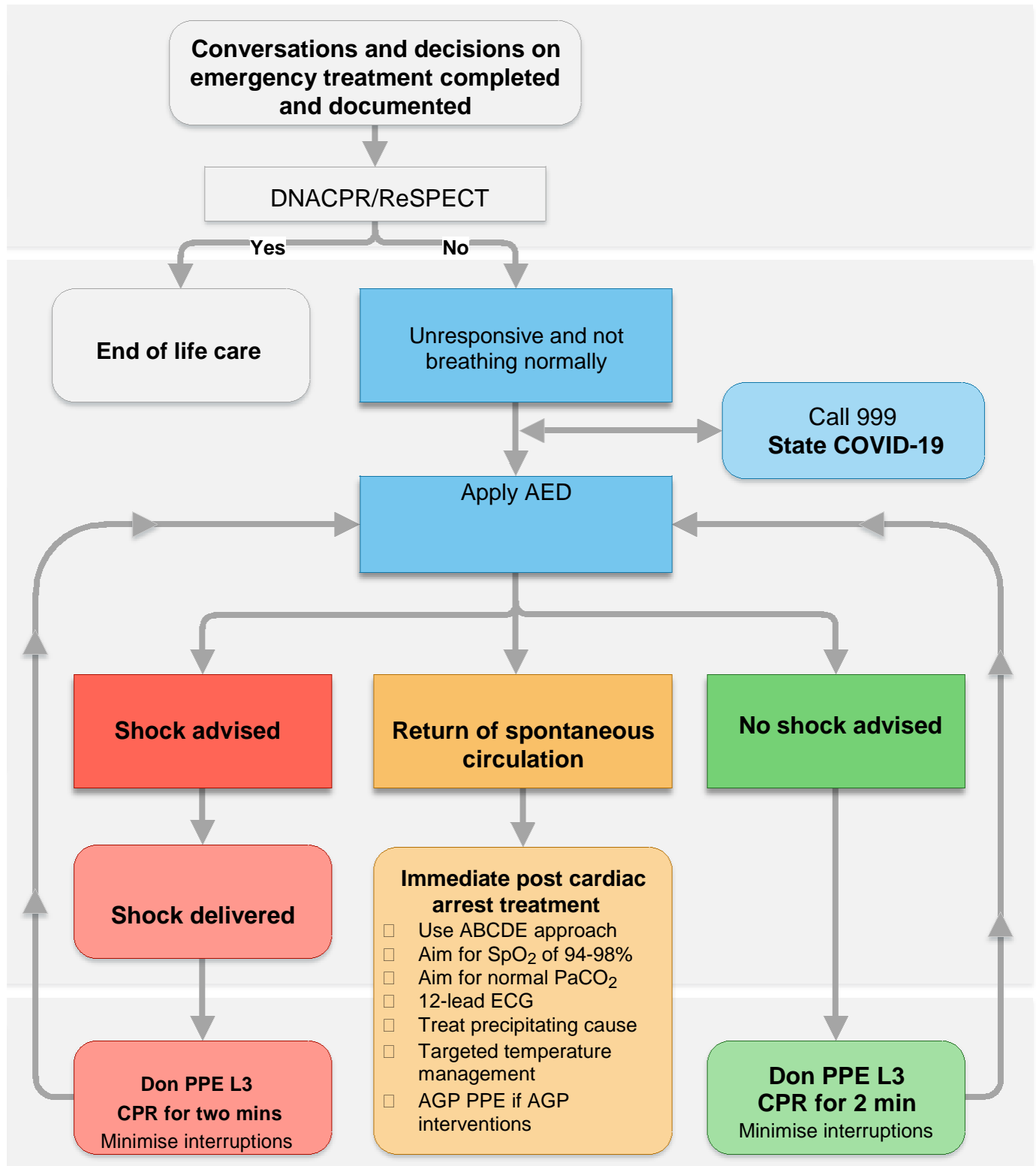


Adult In-Hospital Life Support for COVID-19



During CPR

- Ensure high-quality chest compressions
- Minimise interruptions to compressions
- Give oxygen
- Consider reversible causes 4Hs and 4Ts
- Use waveform capnography
- Continuous compressions when advanced airway in place
- Vascular access (IV or IO)
- Give adrenaline every three-five mins
- Give amiodarone after three shocks

Recommended PPE

Level 2 PPE

- Disposable gloves
- Disposable apron
- Fluid-resistant surgical mask
- Disposable eye protection

- ### Level 3 AGP (aerosol generating procedures) PPE
- Disposable gloves
 - Disposable gown
 - Filtering face piece (FFP3) respirator
 - Disposable eye protection

Resuscitation Council (UK)

March 2020 guidelines

Kate Pears (Resuscitation Lead)