



Your e-newsletter

July 2024

The Mental Health, Learning Disabilities and Autism Delivery Board brings together partner organisations working across health and social care in Derby and Derbyshire. The Board is responsible, on behalf of Joined Up Care Derbyshire (JUCD), for overseeing system-wide delivery, performance improvement and transformation. The Board's aim is to collectively make improvements to outcomes for people with mental illness, learning disabilities and/or autism and to implement the requirements of the NHS Long Term Plan.

The Delivery Board met on 4 July 2024. This update shares key points of discussion from the meeting.

New chair of the Board

As part of a review of the role of the system delivery boards, the Mental Health, Learning Disabilities and Autism Delivery Board has a new chair: **Professor Dean Howells**, Chief Nurse at NHS Derby and Derbyshire Integrated Care Board.

At the start of the meeting, Dean thanked the previous co-chairs, Mark Powell and Vikki Ashton Taylor of Derbyshire Healthcare NHS Foundation Trust. (Vikki will now take up the role of vice-chair.) Dean emphasised that the board would continue to involve its members and develop solutions collaboratively.

[Back to top](#)

ADHD assessments for adults in Derbyshire

A report was presented on Derby and Derbyshire's ADHD pathway, with a particular focus on plans to address the challenges around ADHD assessments for adults (those aged 16 and over).

Like many parts of the country, adults in Derby and Derbyshire currently have to wait for an ADHD assessment due to the demand for the service – over 2,000 referrals for adult ADHD assessments were made locally in the last 12 months alone.

At present, assessments for Derby and Derbyshire residents are carried out by Sheffield Adult Autism and Neurodevelopmental Service (SAANs), part of Sheffield Health and Social Care NHS Foundation Trust. The contract with SAANs will end during this calendar year, and the aim is to have a new, more local assessment service in place by 1 December 2024, along with a plan to reduce waiting times.

Lessons will be learned from the development of the children's neurodevelopmental pathway, and a number of options will be considered – including whether to integrate the pathway to include education, social care, healthcare and other agencies; and whether to jointly commission ADHD and Autism assessments.

[Back to top](#)

Mental Health Inpatient Strategic Plan

The demand for acute mental health inpatient services in Derby and Derbyshire remains high; demand for beds has risen by 15% overall since the pre-COVID period and exceeds available bed numbers. In addition, there have been increasing numbers of admissions under the Mental Health Act, reflecting the growing complexity of people's needs.

A new three-year Mental Health Inpatient Strategic Plan aims to bring together all the key projects – and partners – that are focused on the improvement of these services.

The plan, which was shared in draft form at the meeting and will be published on the Integrated Care Board website by the end of July, focuses on:

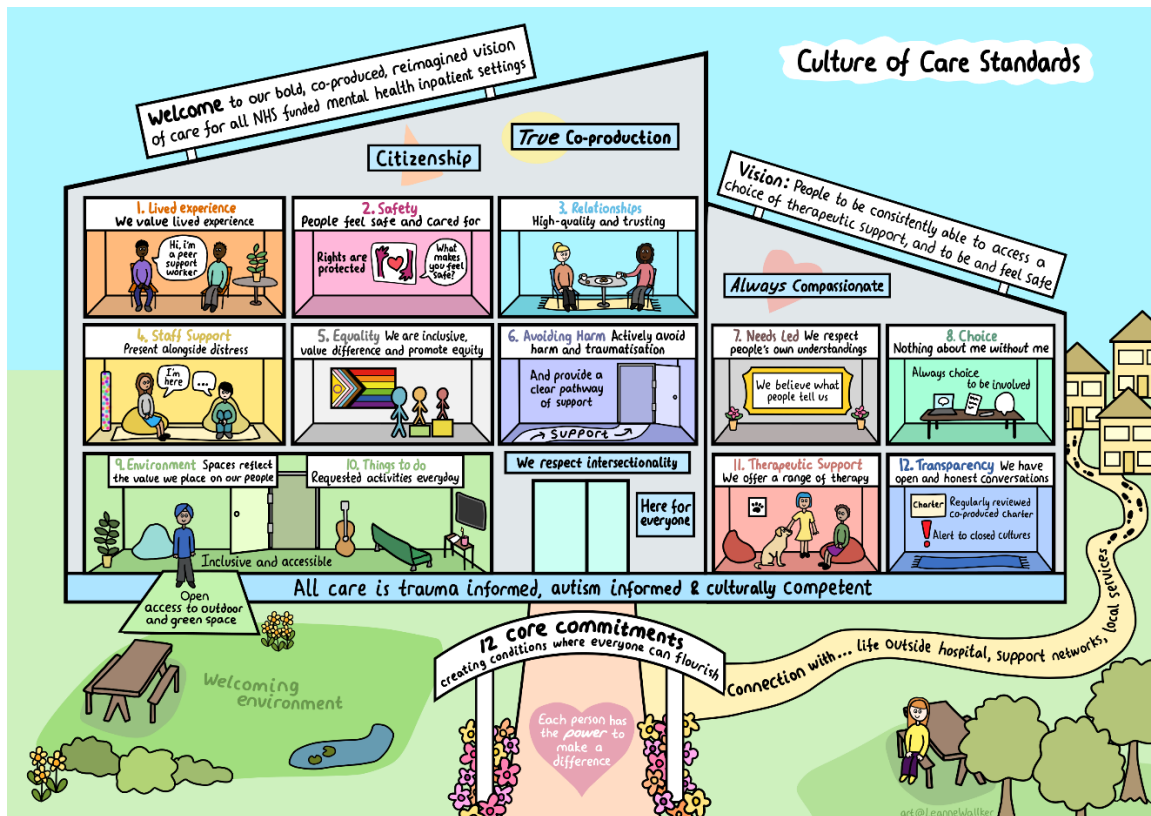
- **Drawing on the different strengths of the partner agencies and creating a shared approach** – with a collaborative forum and a commitment to the [culture of care standards](#), a national set of care standards to which Derbyshire Healthcare employee Leanne Walker contributed; Leanne has lived experience of using mental health services. See the illustration below to learn more about the standards.
- **Eliminating long stays that have no therapeutic benefit** – with additional capacity to strengthen discharge processes and an expansion of care and treatment reviews.
- **Stronger governance and oversight** – with an updated quality assurance framework and a new quality dashboard to check on progress.

Performance will be measured by looking at a number of indicators, including reductions in:

- Inappropriate out-of-area placements for acute admissions
- People with learning disabilities and/or autism receiving inpatient care
- People with a severe mental illness (SMI) receiving level 2 inpatient rehabilitation services
- People with SMI receiving secure mental health inpatient services
- Waits in ED and length of stay
- Episodes and duration of restrictive practice.

Delivery Board members acknowledged that these strategic aims will be complemented by the opening of the [new acute inpatient facilities in Chesterfield and Derby](#) in the months ahead.

A greater focus on **'flow' through the system** will also support the strategic plan, by ensuring that beds are freed up more quickly when someone is ready to be discharged or transferred to another service. Derbyshire Healthcare NHS Foundation Trust – which runs the Hartington Unit and Radbourne Unit – presented an acute flow action plan at the meeting. Trust colleagues will be focusing on more purposeful admissions, the setting of an expected discharge date early in a person's stay, and greater collaboration with community mental health teams and other partners throughout the period of inpatient care, to ease the discharge process.



Click on the illustration to view it in more detail on the NHS England website.

[Back to top](#)

Performance update

The Delivery Board reflected on a generally strong set of recent performance figures:

- NHS Talking Therapies access and wait times are on target, though a small number of patients are waiting too long between their first and second treatments
- Children's eating disorders services are on target for waiting times for both urgent and routine referrals
- Access numbers are strong for community mental health services – across adult, older adult and perinatal (mother and baby) mental health services
- Dementia diagnosis rates remain above target, and have stayed consistently above target for over a year
- Care treatment reviews for people using our learning disabilities (LD) and autism services are all at 100%, while the number of people with LD and/or autism in adult mental health inpatient care is down to its lowest level in several years
- Waiting times for adult ASD assessments are continuing to fall, thanks to award-winning improvements in the assessment process; see the [Derbyshire Healthcare website](#) for details of this award win.

Board members discussed the challenge of increasing the percentage of people with a learning disability (LD) who attend an annual health check from their GP. A project to explore this issue was recently set up by the Adult Neurodevelopmental Service; every stage of the project was co-designed and co-produced with the service's employed experts by experience, an LD advocacy group and the Derby LD partnership board. The input from people with LD, carers and professionals not only enriched the quality and data, but also enabled the whole project to be meaningful, relevant and impactful.

Also under discussion was the potential impact on performance of any changes to residential care and LD short breaks; Derbyshire County Council's [consultations](#) on these issues continue.

[Back to top](#)

If you have any questions or comments on this bulletin, please email dhcft.communications@nhs.net

