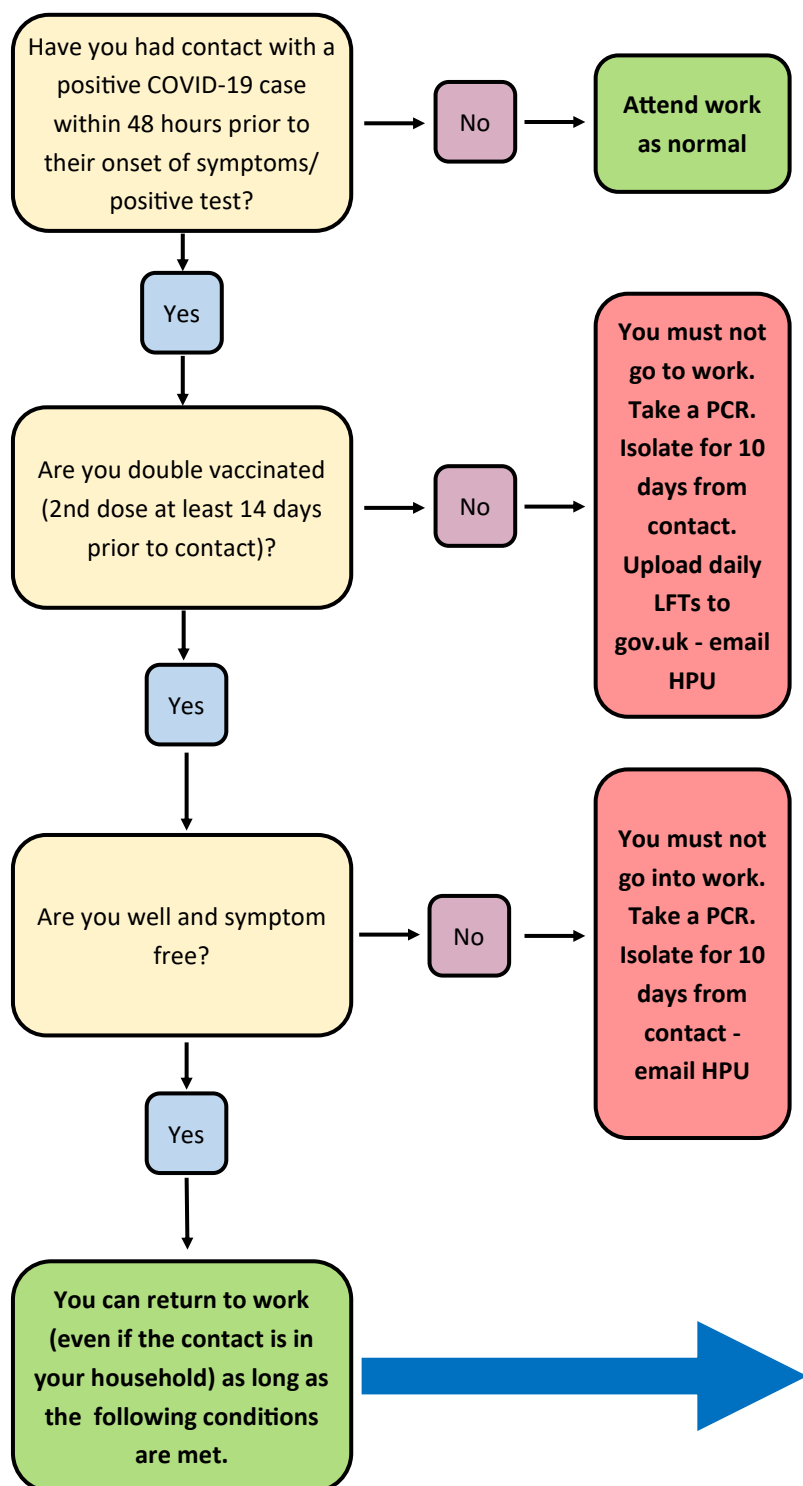


Flowchart for after contact with a positive COVID case



- Take a **PCR test** as soon as possible, do not return to work unless you receive a negative result.
- Let your **line manager** know. They will add you to the manager report and will be jointly responsible for the conditions below being met.
- Use the [self-report tool](#) to register yourself, the HPU will follow up with you.
- **Lateral flow tests** must be done daily for the next 10 days, beginning the day after contact with the positive case. Results to be uploaded to the government portal [Report a COVID-19 rapid lateral flow test result - GOV.UK \(www.gov.uk\)](#) The negative result must be forwarded to dhcft.hpu@nhs.net each day including on days when you're not working.
- If the contact is in your household, lateral flow tests should be done throughout the positive household members' isolation period. If further household members test positive, please contact the Health Protection Unit (HPU) as this will likely extend the period of time you need to do lateral flow tests for.
- If you can work from home, please do. Daily LFTs are still required as above, emailed to your manager or HPU. Written assurance of negative LFTs will be required from the manager to HPU following 10th day before returning to work.